



Light Floral Stitches

with Clothesline Basket Project Instructions

Embroidery Club Feature Collection

15

Designs

5x7 Sewing Field

F70918

Formats: dst, exp, hus, jef, ofm, pes, vip, vip3, xxx



SUNFLOWERS LIGHT STITCH

File: FL2323 (24) 9.Dk. Dk. Yellow2 (1372)
 6.90"W X 4.89"H 10. Gold2 (1359)
 ST: 34,671 (15) 11. Dk. Dk. Gold2 (1173)
 Colors: 20 12. Med. Brown2 (1158)
 1. Yellow2 (1135) 13. Lt. Plum (1080)
 2. Gold2 (1359) 14. Dk. Purple (1112)
 3. Dk. Dk. Gold2 (1173) 15. Black (1000)
 4. Med. Brown2 (1158) 16. Lt. Lt. Turquoise (1092)
 5. Lt. Mint2 (1047) 17. Dk. Lavender (1330)
 6. Med. Teal4 (1391) 18. Black (1000)
 7. Dk. Dk. Teal (1290) 19. Lt. Plum (1080)
 8. Yellow2 (1135) 20. Black (1000)



LILIES LIGHT STITCH

File: FL2324 (24) 5. Lt. Lt. Maroon (1115)
 6.97"W X 4.09"H 6. Lt. Yellow (1067)
 ST: 17,199 (15) 7. Dk. Dk. Fuchsia2 (1383)
 Colors: 13 8. Lt. Silver (1010)
 1. Teal5 (1098) 9. Med. Yellow (1064)
 2. Dk. Dk. Avocado (1189) 10. Silver (1011)
 3. Lt. Green2 (1101) 11. Lt. Lt. Periwinkle2 (1198)
 4. Dk. Dk. Teal2 (1397) 12. Lt. Lt. Sage3 (1100)
 13. Black (1000)



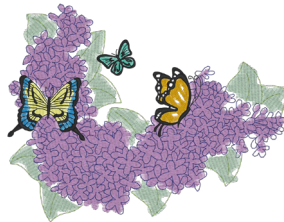
ROSES LIGHT STITCH

File: FL2325 (24) 4. Med. Rust (1039)
 6.90"W X 3.95"H 5. Dk. Rust (1038)
 ST: 22,158 (15) 6. Lt. Lt. Yellow2 (1222)
 Colors: 11 7. Peach2 (1254)
 1. Lt. Lt. Sage3 (1100) 8. Med. Orange (1077)
 2. Dk. Dk. Avocado (1189) 9. Lt. Lt. Gold2 (1066)
 3. Med. Blush (1220) 10. Yellow (1124)
 11. Med. Yellow3 (1125)



BUTTERFLIES W/WILDFLOWERS LIGHT STITCH

File: FL2326 (24) 2. Med. Yellow (1064)
 4.91"W X 6.68"H 3. Yellow7 (1224)
 ST: 30,169 (15) 4. Tan (1055)
 Colors: 7 5. Lt. Brown2 (1344)
 1. Yellow2 (1135) 6. Dk. Yellow2 (1069)
 7. Black (1000)



BUTTERFLIES W/LILIES

File: FL2327 (24) 4. Dk. Dk. Lavender (1322)
 6.38"W X 4.93"H 5. Lt. Tangerine2 (1137)
 ST: 29,382 (15) 6. Black (1000)
 Colors: 11 7. Lt. Teal (1046)
 1. Lt. Lt. Sage2 (1047) 8. Black (1000)
 2. Med. Lime (1048) 9. Yellow4 (1023)
 3. Lt. Plum (1080) 10. Blue (1133)
 11. Black (1000)



FLORAL LIGHT STITCH

File: FL2328 (24) 4. Dk. Dk. Avocado (1189)
 6.90"W X 3.96"H 5. Periwinkle (1143)
 ST: 15,246 (15) 6. Dk. Dk. Yellow2 (1372)
 Colors: 10 7. Dk. Gold2 (1191)
 1. Lt. Tangerine (1155) 8. Tangerine (1065)
 2. Lime (1377) 9. Lt. Periwinkle (1275)
 3. Rust (1221) 10. Black (1000)



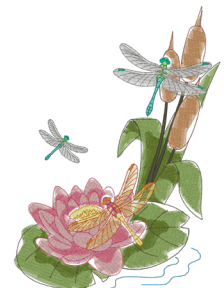
TULIPS LIGHT STITCH

File: FL2329 (24) 2. Avocado2 (1169)
 4.91"W X 6.77"H 3. Dk. Avocado2 (1170)
 ST: 19,646 (15) 4. Lt. Peach (1017)
 Colors: 6 5. Lt. Orange (1152)
 1. Lt. Lime (1248) 6. Dk. Peach (1179)



IRIS LIGHT STITCH

File: FL2330 (24) 3. Dk. Avocado2 (1170)
 4.90"W X 6.78"H 4. Med. Silver (1151)
 ST: 23,982 (15) 5. Lt. Plum (1080)
 Colors: 9 6. Dk. Plum (1188)
 1. Lt. Lt. Sage2 (1099) 7. Silver (1011)
 2. Med. Lime (1048) 8. Dk. Yellow2 (1069)
 9. Dk. Dk. Plum2 (1388)



DRAGONFLIES LIGHT STITCH

File: FL2331 (24) 7. Dk. Tan (1256)
 4.94"W X 6.79"H 8. Dk. Beige (1258)
 ST: 23,431 (15) 9. Lt. Lime (1248)
 Colors: 27 10. Mint (1282)
 1. Med. Lime (1048) 11. Green (1051)
 2. Dk. Avocado2 (1170) 12. Dk. Teal3 (1293)
 3. Med. Peach (1016) 13. Lt. Silver (1010)
 4. Lt. Red (1107) 14. Teal4 (1380)
 5. Dk. Pink (1354) 15. Dk. Gray (1288)
 6. Dk. Dk. Avocado2 (1357) 16. Med. Blue (1177)
 17. Lt. Red (1107)
 18. Yellow2 (1135)
 19. Lt. Yellow (1067)
 20. Yellow2 (1135)
 21. Tangerine (1065)
 22. Lt. Rust (1226)
 23. Avocado5 (1350)
 24. Dk. Avocado2 (1170)
 25. Dk. Dk. Fuchsia2 (1383)
 26. Tangerine (1065)
 27. Dk. Tangerine (1021)



Light Floral Stitches

with Clothesline Basket Project Instructions

Embroidery Club Feature Collection

15

Designs

5x7 Sewing Field

F70918

Formats: dst, exp, hus, jef, ofm, pes, vip, vip3, xxx



HONEYBEES LIGHT STITCH

- File: FL2332 (24)
6.89"W X 4.11"H
ST: 11,704 (15)
Colors: 15
- | | |
|-----------------------------|---------------------------|
| 1. Yellow4 (1023) | 6. Med. Lime (1048) |
| 2. Dk. Dk. Tangerine (1257) | 7. Med. Green2 (1392) |
| 3. Dk. Yellow (1024) | 8. Lt. Fuchsia (1321) |
| 4. Dk. Dk. Blue Gray (1277) | 9. Med. Plum (1310) |
| 5. Dk. Gold2 (1191) | 10. Peach2 (1254) |
| | 11. Dk. Red4 (1238) |
| | 12. Med. Yellow (1064) |
| | 13. Lt. Lt. Silver (1086) |
| | 14. Black (1000) |
| | 15. Med. Gray (1118) |



GOLDFINCH

- File: WL4322 (24)
4.91"W X 6.87"H
ST: 17,604 (15)
Colors: 16
- | | |
|-----------------------------|-----------------------------|
| 1. Lt. Rust (1226) | 7. Dk. Gray (1288) |
| 2. Dk. Dk. Tangerine (1257) | 8. Lt. Lt. Gold3 (1323) |
| 3. Black (1000) | 9. Lt. Lt. Tangerine (1026) |
| 4. Lt. Lt. Avocado (1305) | 10. Dk. Dk. Gray (1361) |
| 5. Dk. Sage (1394) | 11. Black (1000) |
| 6. Yellow2 (1135) | 12. Dk. Lime (1049) |
| | 13. Med. Lime (1048) |
| | 14. Dk. Dk. Avocado (1189) |
| | 15. Lt. Lt. Fuchsia (1121) |
| | 16. Med. Plum (1310) |



HUMMINGBIRD LIGHT STITCH

- File: WL4323 (24)
4.89"W X 6.77"H
ST: 23,075 (15)
Colors: 19
- | | |
|---------------------------|---------------------------|
| 1. Dk. Lime (1049) | 9. Lt. Teal (1046) |
| 2. Lt. Fuchsia (1321) | 10. Lt. Lime (1248) |
| 3. Fuchsia2 (1309) | 11. Teal (1090) |
| 4. Dk. Dk. Avocado (1189) | 12. Lavender2 (1261) |
| 5. Fuchsia (1109) | 13. Lt. Lt. Silver (1086) |
| 6. Med. Yellow (1064) | 14. Med. Lavender2 (1387) |
| 7. Blue2 (1029) | 15. Med. Gray (1118) |
| 8. Lt. Lt. Silver (1086) | 16. Dk. Dk. Blue (1243) |
| | 17. Dk. Dk. Silver (1287) |
| | 18. Black (1000) |
| | 19. Green (1051) |



ROBIN LIGHT STITCH

- File: WL4324 (24)
6.60"W X 4.92"H
ST: 19,368 (15)
Colors: 20
- | | |
|-----------------------------|----------------------------|
| 1. Lt. Lime (1248) | 9. Lt. Lt. Gray (1286) |
| 2. Dk. Dk. Taupe (1129) | 10. Dk. Dk. Gray (1361) |
| 3. Lt. Lt. Blush2 (1113) | 11. Med. Yellow2 (1068) |
| 4. Lt. Rust (1226) | 12. Dk. Umber (1229) |
| 5. Lt. Lt. Tangerine (1026) | 13. Dk. Beige (1258) |
| 6. Lt. Rust (1226) | 14. Med. Gray (1118) |
| 7. Med. Gray (1118) | 15. Dk. Gold (1025) |
| 8. Lt. Beige (1060) | 16. Dk. Dk. Avocado (1189) |
| | 17. Dk. Blush (1341) |
| | 18. Med. Yellow (1064) |
| | 19. Black (1000) |
| | 20. White (1001) |



CARDINAL LIGHT STITCH

- File: WL4325 (24)
6.44"W X 4.91"H
ST: 16,185 (15)
Colors: 12
- | | |
|---------------------------|--------------------------|
| 1. Med. Yellow (1064) | 5. Pink (1108) |
| 2. Dk. Dk. Avocado (1189) | 6. Lt. Lt. Rust (1217) |
| 3. Lt. Lt. Taupe (1138) | 7. Med. Fuchsia (1110) |
| 4. Med. Lime (1048) | 8. Black (1000) |
| | 9. Lt. Green (1369) |
| | 10. Dk. Dk. Taupe (1129) |
| | 11. Rust (1221) |
| | 12. Blue2 (1029) |



BLUEBIRD LIGHT STITCH

- File: WL4326 (24)
5.95"W X 4.91"H
ST: 13,536 (15)
Colors: 13
- | | |
|---------------------------|------------------------------|
| 1. Lt. Periwinkle2 (1075) | 5. Lt. Umber (1062) |
| 2. Blue4 (1276) | 6. Brown (1056) |
| 3. Dk. Gray (1288) | 7. Dk. Dk. Periwinkle (1366) |
| 4. Tan (1055) | 8. Lt. Pink2 (1116) |
| | 9. Black (1000) |
| | 10. Lt. Green2 (1101) |
| | 11. Gold2 (1359) |
| | 12. Med. Plum (1310) |
| | 13. Lt. Maroon (1315) |